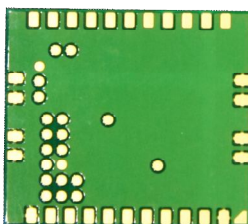


RPMA Module



Features

- RPMA module for Low Power WAN RPMA network
- Small foot print L:20.5 x W:18 x H:2.35 mm
- High sensitivity down to -133dBm
- Design for quick integration of sensors to RPMA networks
- Support 2.4 GHz ISM band
- Operating temperature -40°C ~ +85°C
- SDK support for SPI interface

This GIoT RPMA Module is a general purpose SiP module for sensor integration for RPMA networks. Sensor vendors can speed up their RPMA Low Power WAN integration by embedding this module in their designs. This module will take care of the RPMA communication with RPMA networks. The controlling interface is based on industry standard SPI interface.

Specification

Model Name	GR0136
Frequency Band	2.4 GHz ISM (2402~2482MHz)
Wireless	RPMA
Modulation	DSSS-DBPSK
Operating Voltage	3.3 V \pm 10%
Operating Temperature	-40°C ~ 85°C
Storage Temperature	-40°C ~ 85°C
Interfaces	SPI interface
Transmit RF Power	21.5 dBm
Receive Sensitivity	Down to -133 dBm
RF Transceiver	Airoha AL2236
Dimensions	L:20.5 x W:18 x H:2.35 mm
Weight	1.88 g
Security	AES 128